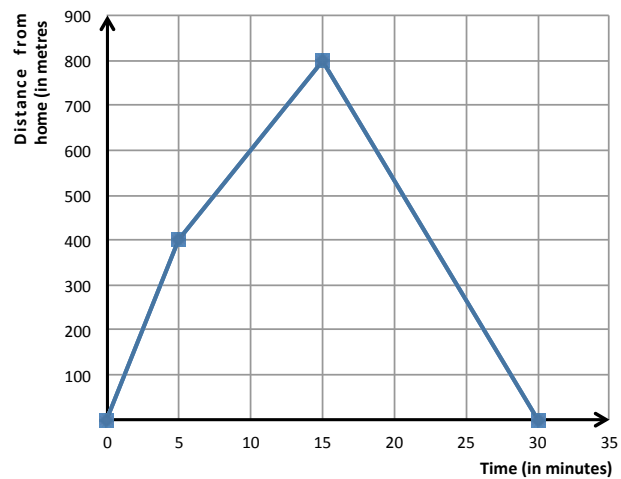


## Worksheet 6

What is the story represented in this graph?  
How did you identify it?



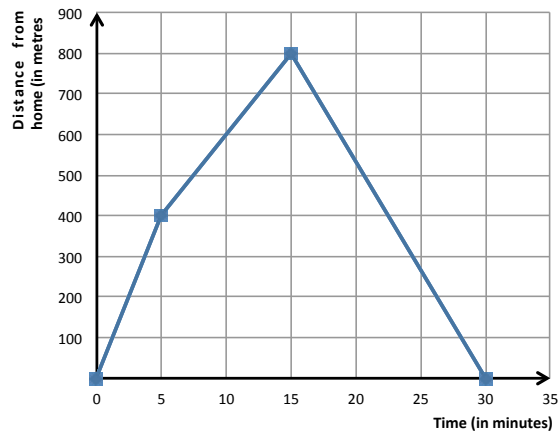
**Story A:** Tommaso takes his dog for a walk to the park. At the beginning he walks slowly, then he increases his pace. When he reaches the park, he decides to come back home.

**Story B:** Tommaso rides his bike from his home up a steep hill. After a while the slope eased off. At the top he raced down the other side.

**Story C:** Tommaso goes out for a jog. At the end of his road, he bumps into a friend and he slows down to walk with him for a while. When Tommaso left his friend he goes back home.

## Worksheet 6A – Helping worksheet

What is the story represented in this graph?  
How did you identify it?



**Story A:** Tommaso takes his dog for a walk to the park. At the beginning he walks slowly, then he increases his pace. When he reaches the park, he decides to come back home.

**Story B:** Tommaso rides his bike from his home up a steep hill. After a while the slope eased off. At the top he raced down the other side.

**Story C:** Tommaso goes out for a jog. At the end of his road, he bumps into a friend and he slows down to walk with him for a while. When Tommaso left his friend he goes back home.

### Help to identify the story:

Collect, in the following table, the information provided by the graph:

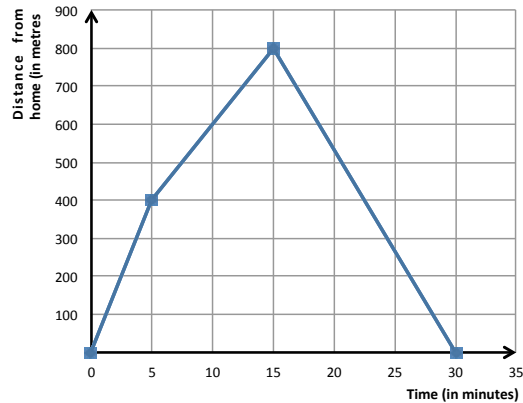
Time	Distance from home
0 minutes	
5 minutes	
15 minutes	

Answer to the following questions:

- What is the distance that Tommaso has walked through during the first 5 minutes?
- What is the distance that Tommaso has walked through in the period of time from 5 minutes to 15 minutes?
- Which is the period of time (among those analysed in the previous answers) during which Tommaso walks quickly?
- What is, therefore, the story represented in the graph?

## Worksheet 6B

What is the story represented in this graph?  
How did you identify it?



**Story A:** Tommaso takes his dog for a walk to the park. At the beginning he walks slowly, then he increases his pace. When he reaches the park, he decides to come back home.

**Story B:** Tommaso rides his bike from his home up a steep hill. After a while the slope eased off. At the top he raced down the other side.

**Story C:** Tommaso goes out for a jog. At the end of his road, he bumps into a friend and he slows down to walk with him for a while. When Tommaso left his friend he goes back home.

**Second help**  
to identify the story:

Time	Distance from home
0 minutes	0m
5 minutes	400m
15 minutes	800m

We observed that, at the beginning, Tommaso walks for 400m in 5 minutes. Afterward, he walks for 400m in 10 minutes. For this reason he moves quickly during the first 5 minutes, because it takes him less time to walk through the same distance.

What is the story that, surely, is not represented by the graph?